

How to Prepare Signature Pad

Note

There are some requirements before you are able to install/use the software

1) If using Internet Explorer:

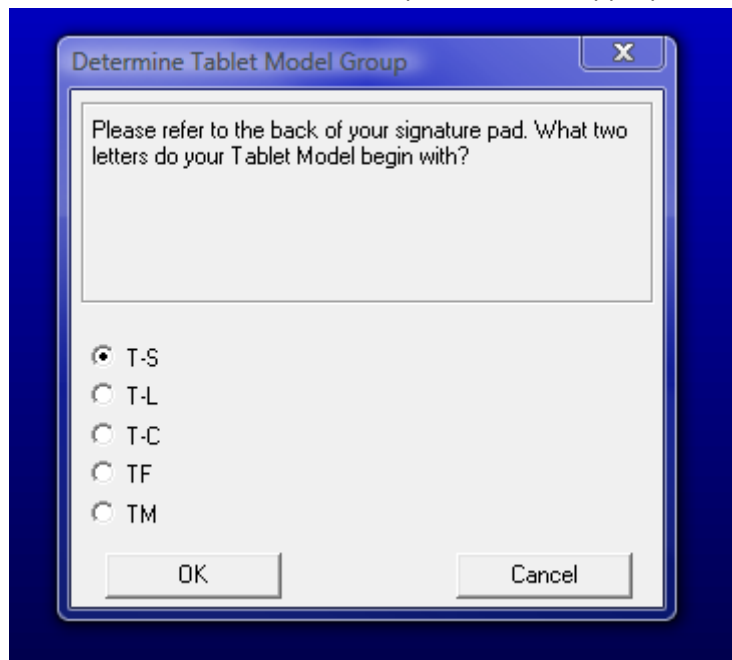
- Make sure that Compatibility mode is not enabled when on TREAT website. If this feature is turned on, TREAT will give you an error
- In Internet Explorer 10 and above: During your first use you will receive a certificate use notification. You will need to accept this to be able to use the signature pad.

2) You will require Microsoft .NET Framework software. To enable/install this software, download and install the files according to your operating system (Windows 8 vs. Windows 8.1) and run the program.

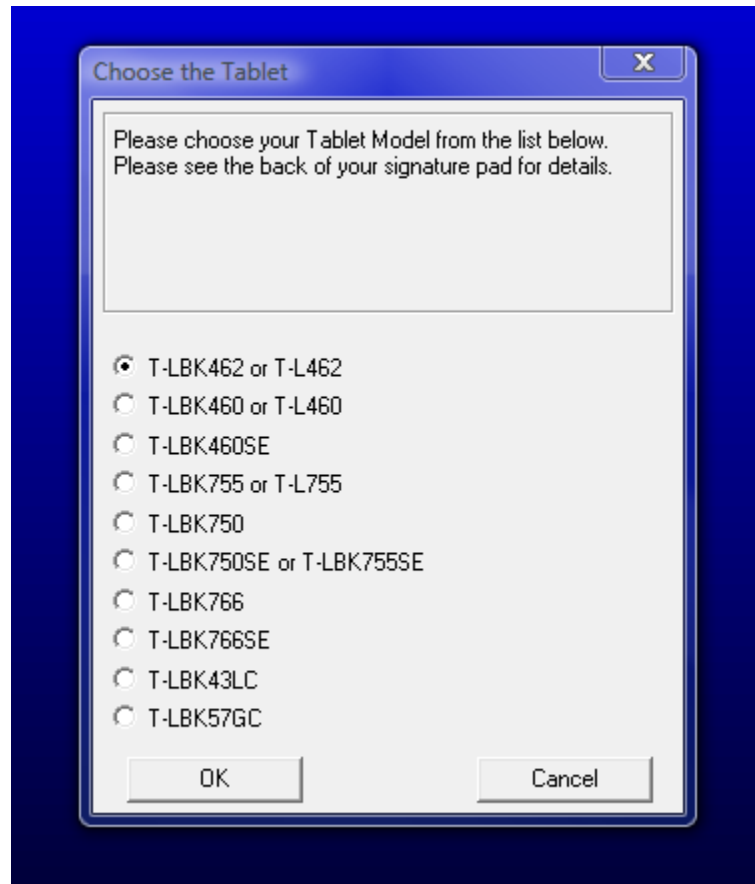
- You will know that this is an issue when you receive .net framework missing error when installing sigwebapi

Installation Guide:

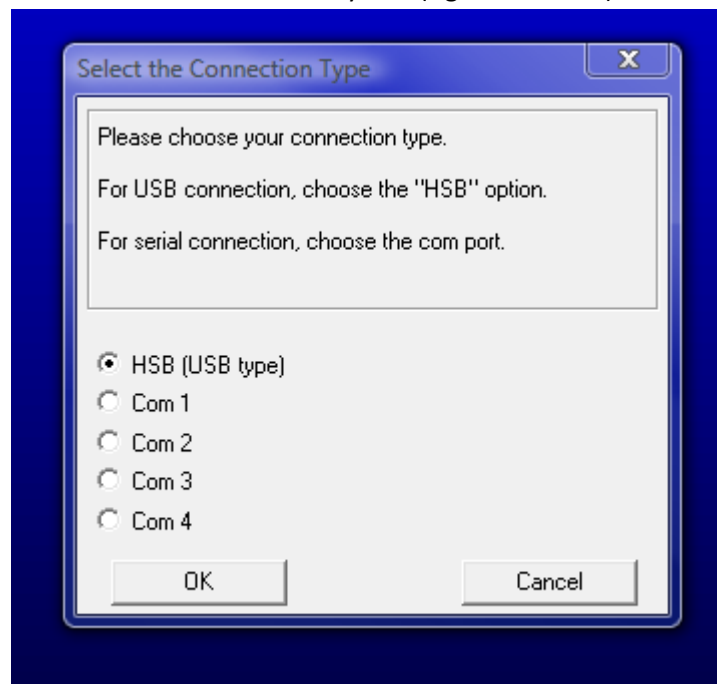
- 1) Download SigWebAPI installer listed in the Appendix Below
- 2) Click Next on the install screen
- 3) Refer to the model number on the back of the pad select the appropriate two letters.



- 4) Continue with selecting the next series of letters and numbers for the model number

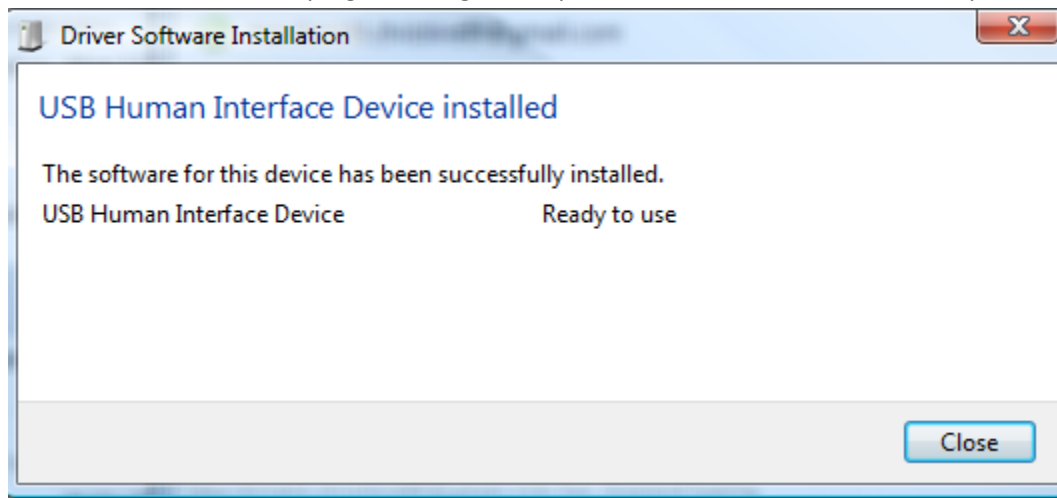


- 5) Select HSB (if it's a USB model) or Com1-4 if it is not and it is any other form of cable. This can also be seen in the model number at the very end (right hand side).



- 6) Follow the rest of the installation steps normally

- 7) After installations finish, plug in the signature pad and wait for Windows to set up the device.



- 8) Your device is now ready for use

For additional help please contact HInext support @ support@hinext.com or Babak Maghsoudloo @ Babak.maghsoudloo@hinext.com

Appendix

SigWeb API installer: <https://www.treattools.com/sigweb/sigweb.exe>

Windows 8.1 3.5 .net framework: https://www.treattools.com/sigweb/dotNetFx35_W8.1_x86_x64.exe

Windows 8 3.5 .net framework: https://www.treattools.com/sigweb/dotnet_win8.zip